

Epic Motorsports® Show Low

1000 Auto Mall Parkway
Show Low, Arizona (AZ) 85901
Call Us: (928) 532-7433
<https://www.epicmotorsportsshowlow.com/>



EPIC MOTORSPORTS

2025 POLARIS® RANGER CREW XP 1000 NORTHSTAR EDITION ULTIMATE

\$35,999

PRICE DOES NOT INCLUDE TAX, TITLE, LICENSING, FEES & ACCESSORIES



2025 POLARIS® RANGER CREW XP 1000 NORTHSTAR EDITION ULTIMATE

FEND OFF THE ELEMENTS

- OFF-ROAD CLIMATE CONTROL

Rain or shine, there's no stopping you from getting the work done with RANGER XP 1000 NorthStar Edition.

Features may include:

COMFORT

Every detail of the refined interior puts the driver and passengers first for comfort and convenience.

- Keep the Elements Out

The factory-installed Pro Shield cab system protects from dust, dirt and water, and reduces noise—so you can enjoy conversation and comfortably ride in rainy, snowy or dusty conditions.

- Control Your Climate

Factory-installed heating and air conditioning lets you control the climate for all-season comfort. For quick relief on hot days, a variable AC compressor automatically varies its pumping capacity to deliver faster cooling and lower temperatures, even when at idle and low engine RPMs.

- Sunup to Sundown Comfort

Find your happy place with a tilt steering wheel and newly styled, adjustable contoured seats featuring back bolsters and extra-plush seat cushions.

- In-Cab Convenience

Secure a spot for your must-have items with a dual integrated glove box and up to 8 cup holders. Plus, charge your devices with a USB charging port.

NORTHSTAR EDITION ULTIMATE FEATURES

Elevate the ultimate off-road, in-cab experience further by upgrading to the NorthStar Edition Ultimate.

- Immersive Sound System

Elevate your day with audio, thanks to integrated JBL speakers that deliver precise audio clarity and premium sound. Enjoy AM/FM radio or connect to Bluetooth via the RIDE COMMAND infotainment system.

- Convenient Power Windows

Enjoy the convenience that comes with front-door power windows, featuring a sure-closing, tight-sealing 360° gasket seal to the vehicle.

- Control Your Coverage

Close the Pro Shield Full Glass Tip-Out Windshield for protection from the elements. Open it to experience the breeze and open-cab feel.

Capability Meets Utility

The RANGER XP 1000 NorthStar Edition makes every task easier with thoughtful innovation and toughness.

- Performance with Precision

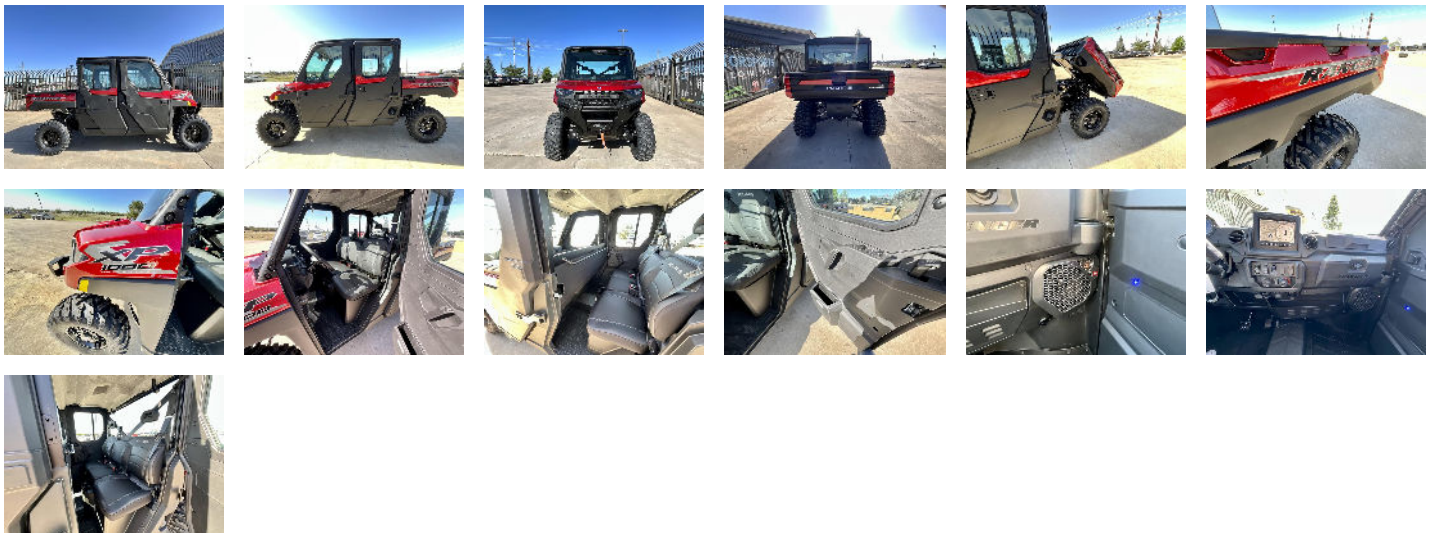
Stay smooth and controlled on the job or trail, thanks to 3-position throttle control with different drive modes. Choose Performance for more response, Standard for normal throttle response, or Work for improved low-speed control.

- Equipped to Adapt

Adapt to the terrain with 3 driveline modes: AWD, 2WD and VersaTrac Turf. For work around the house, use VersaTrac Turf Mode to unlock the rear differential—enabling easier and tighter turns that won't tear up your lawn.

PRICE DOES NOT INCLUDE TAX, TITLE, LICENSING, FEES & ACCESSORIES

PHOTOS



HIGHLIGHTS

- **Condition** New
- **Availability** In Stock
- **Location** Epic Motorsports® Show Low
- **Stock Number** P58449
- **Vin** 4XARSY992S8758449
- **Vehicle Type** Utility Vehicle
- **Category** Utility
- **Color** SUNSET RED

MANUFACTURER INFO

Engine	
Engine Type	ProStar 4-Stroke Twin Cylinder DOHC
Cylinders-Displacement (cc)	999cc
Cooling	Liquid
Engine Power	82 HP
Fuel System	Electronic Fuel Injection
Electronic Power Steering	High Output EPS
Drivetrain	
Drive System	High Performance On-Demand True AWD/2WD/VersaTrac Turf Mode
Transmission	Gen 2 Automatic PVT H/L/N/R/P; Shaft
Steering	Tilt: Standard
Suspension	
Front Suspension	Dual A-Arm
Rear Suspension	Dual A-Arm IRS
Front Travel (in./cm.)	10 in. (25.4 cm)
Rear Travel (in./cm.)	10 in. (25.4 cm)
Brakes	
Front braking system	4-Wheel Hydraulic Disc with Dual-Bore Front Calipers
Rear braking system	4-Wheel Hydraulic Disc with Dual-Bore Front Calipers
Parking Brake	Park In-Transmission
Wheels & Tires	
Wheels	Aluminum
Front Tire	29 x 9-14; PRO ARMOR X-TERRAIN Tire Ply Rating:8-Ply Rated
Rear Tire	29 x 11-14; PRO ARMOR X-TERRAIN Tire Ply Rating:8-Ply Rated
Dimensions	
Bed Box Dimensions (LxWxH)	36.75 x 54.25 x 12.5 in (93 x 138 x 32 cm)
Ground Clearance	14 in (36 cm)
Overall Vehicle Size (LxWxH)	152 x 65 x 79 in (386 x 165 x 201 cm)
Wheelbase	113 in (287 cm)
Hitch/Type	Standard 2 in (5 cm) Receiver
Turning Radius	200 in (5.1 m)
Capacities	
Box Capacity	1000 lbs (454 kg)

Fuel Capacity	11.5 gal (43.5 L)
Payload Capacity	1,150 lb (522 kg)
Seating Capacity	6
Weights	
Estimated Dry Weight (lbs./kgs.)	2,387 lbs. (1,083 kg)
Hitch Towing Rating	2,500 lb (1,134 kg)
GVWR	3750 lbs (1701 kg)
Color	
Color/Graphics	Onyx Black, Sunset Red, Blue Slate Metallic Smoke
Lights and Safety	
Lighting	Dual LED Headlights, 1250lm Low Beam, 2300lm High Beam, Dual LED Tail Lights
Features	
Cargo System	Lock & Ride®
Features	<p>Audio System: JBL Trail Pro 2000 Water Fording Height: Equal to the Floorboards Other Standard: Premium Pro-Shield Cab; Doors with Power Windows; Tip-Out Glass Windshield with Wiper; Rear Glass Panel; Factory-Installed Heat, AC, Defrost; Rearview Mirror; Premium Steering Wheel and Interior Accents; NorthStar Tailgate Badge; Front Bumper with Integrated Winch, Plow & LED Mounts; Premium Cut & Sew Seats with Contoured Seatbacks and Embroidered Polaris Branding; Polaris HD 4500 lb Synthetic Rope Winch with Autostop and Wireless Remote; Polaris Pulse Electrical System (6-Position) Underhood Busbar and 6-Position Roof Busbar; 12V Accessory Outlet; Battery Trickle-Charging Outlet; USB Outlet</p>
Instrumentation	<p>7" Display Powered by RIDE COMMAND: Plow Mode, Group Ride, GPS Navigation, Bluetooth, AM/FM Radio; Dual-sweep Analog Dials w/ 4" LCD Rider Information Center: User Selectable Blue/Red Backlighting & Brightness, Programmable Service Intervals, Speedometer, Tachometer, Odometer, Tripmeter, Clock, Hour Meter, Gear Indicator, Fuel Gauge, Coolant Temperature, Voltmeter, Service Indicator and Codes, Seat Belt Reminder, 2 DC Outlets, USB Charge Port, Automatic Speed Limiting in 2 mph increments starting at 16 mph to max speed.</p>

DISCLAIMER

Advertised pricing excludes applicable taxes title and licensing, dealer set up, destination, reconditioning and are subject to change without notice. Pricing may exclude any added parts, accessories or installation unless otherwise noted. Sale prices include all applicable offers. Not all options listed available on pre-owned models. Contact dealer for details.